

VoIP ITG-SH16XX /ITG-SH24XX

16 Port SIP/H.323 VoIP Gateway

24 Port SIP/H.323 VoIP Gateway

Overview

By Modular hardware design ITG-SH16XX/ITG-SH24XX series makes any combination of the telephone interface. The Linkpro ITG-SH16XX/ITG-SH24XX Series VoIP Gateway is fully SIP and /H.323 standard compliant high density gateway that provides a total solution for integrating voice-data network and PSTN. By modular installation, this revolutionary compact voice over IP (VoIP) gateway could be easily configured as 16/24 channels high density FXS/FXO VoIP Gateway which provides voice connectivity over the IP network and to the Public Switched Telephone Network (PSTN).



Features

- Modular design to accommodate various types of telephony interfaces.
- Both support SIP and H.323 protocols: SIP Registration and Digest Authentication; H.323 Gatekeeper Registration.
- SIP Single Number / Account for multiple ports.
- Caller ID Delivery: FXS support DTMF Caller ID generation.
- Smart VoIP call Dialing Book: VoIP call Book could provide any application VoIP call to any type destination (Domain name / IP address, PSTN or PBX) or hunting number setting.
- AC termination Impedance : 600/900 OHM and complex impedance
- Answer Supervision for Polarity Reversal Detection and Voice detection
- NAT traversal: This feature allow gateway to operate behind any NAT/Firewall device. Need not to change any configuration of NAT/Firewall like setting virtual server.
- Smart-QoS Guaranteed: This bandwidth management feature provide good voice quality when user place a VoIP call and access internet at the same time. The gateway will automatically start to reserve bandwidth for voice traffic when VoIP call proceeds.
- Call Hunting Facility: This function helps gateway to use the lines effectively. This facility automatically transfers your incoming call to a free line. Subscribers need not indicate numerous numbers of each port of gateway.
- Voice channels status display: This function display each port status like as onhook, offhook, calling number callee's number, talk duration, codec.
- Flash Detection and Generation Program: FXO support Flash Generation and FXS support Flash Detection.
- FXO answer Mode: FXO provides Ringing Answer, Connection Answer and Non Answer for configuration.

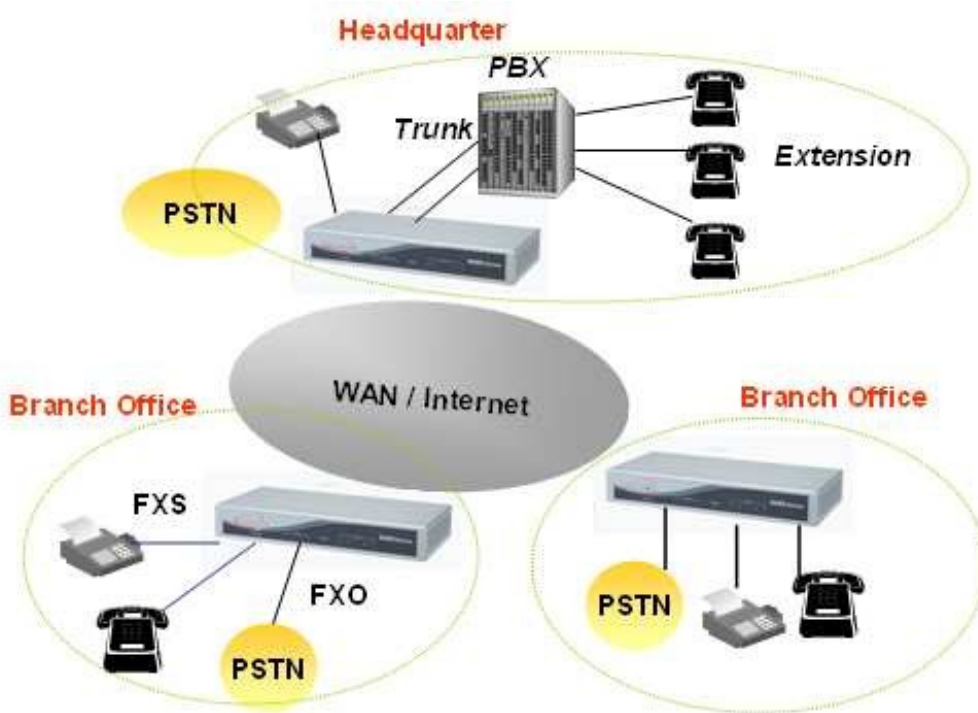
- Support FXS Battery Revere Generation
- Support MWI (Message Waiting Indicator) by SIP Notify (Optional).
- FXO anti-seized mechanism : FXO provides busy tone auto-learning and manually configuration busy tone learning.
- Support IP TOS (IP Precedence) / DiffServ

Specifications

Telephony Specification	Voice Codec	● G.711(A-law / μ -law), G.729 AB, G.723 (6.3 Kbps / 5.3Kbps)
	FAX support	● T.30 / T.38
	Echo Cancellation	● G.165/G168
	FXS Tone Table Configuration	● Support tone frequency and cadence configuration
	FXO hang up detection / anti-seized	● Busy Tone Learning Automatically / Manual Busy Tone Learning
	Answer supervision	● Support Battery Reverse Detection and Voice Detection
	FXO answer delay time	● Support delay 0 – 8000 ms to answer
	Adjustable AC Termination Impedance	● 600 / 900 OHM and complex Impedance
	Failsafe Mechanism (FXS relay to FXO)	● Power failed bypass support / Internet Failed bypass(Optional) / Registered Failed bypass(Optional) / Unconditional bypass(Optional).
	12K Hz and 16K Hz Pulse Metering	● (Customized)
IP Specifications	LAN	● Support Virtual Server, DHCP Server
	WAN	● Support PPPoE client, DHCP client, Fix IP Address, DDNS client
	Network Address Translation	● Providing build-in NAT router function.
	Smart QoS	● Guarantee the voice bandwidth

Call Features	<ul style="list-style-type: none"> ● Voice channels status display 	
	<ul style="list-style-type: none"> ● Direct Dialing Mode : peer to peer call (support IP Address Call or Domain Name Call) 	
	<ul style="list-style-type: none"> ● Register Call Mode : register to SIP Proxy Server or H.323 Gatekeeper 	
	<ul style="list-style-type: none"> ● Adjustable volume : - 9 db ~ 9 db 	
	<ul style="list-style-type: none"> ● Silence Compression / VAD 	
	<ul style="list-style-type: none"> ● Auto Dial for speed 	
	<ul style="list-style-type: none"> ● Dynamic Jitter Buffer 	
	<ul style="list-style-type: none"> ● Hot-Line and Warm-Line Support 	
Configuration & Management	<ul style="list-style-type: none"> ● Web-based Graphical User Interface 	
	<ul style="list-style-type: none"> ● Remote management over the IP Network 	
	<ul style="list-style-type: none"> ● RS232 for configuration 	
	<ul style="list-style-type: none"> ● FTP firmware upgrade 	
	<ul style="list-style-type: none"> ● Backup and Restore Configuration file 	
	<ul style="list-style-type: none"> ● Syslog client support 	
	<ul style="list-style-type: none"> ● Front LCD Panel for System Status and Management 	
	<ul style="list-style-type: none"> ● Auto-Configuration 	
General Specification	<ul style="list-style-type: none"> ● Standard 50 pin RJ-21 Telco connectors 	
	AC power	<ul style="list-style-type: none"> ● AC100V-240V, DC12V/1.5A,50/60 Hz
	Temperature	<ul style="list-style-type: none"> ● 0°C ~ 40°C (Operation)
	Humidity	<ul style="list-style-type: none"> ● up to 90% non-condensing
	Dimension	<ul style="list-style-type: none"> ● 440 x 250 x 45 mm
	Weight	<ul style="list-style-type: none"> ● 5300g (Aluminum)
	Regulatory Compliance	<ul style="list-style-type: none"> ● FCC Part 15 Class B, CE Mark, RoHS Compliant

Application



Ordering Information

- ITG-SH1600 : 16 Port SIP / H.323 VoIP Gateway (16*FXS)
- ITG-SH1608 : 16 Port SIP / H.323 VoIP Gateway (8*FXO+8*FXS)
- ITG-SH1616 : 16 Port SIP / H.323 VoIP Gateway (16*FXO)
- ITG-SH2400 : 24 Port SIP / H.323 VoIP Gateway (24*FXS)
- ITG-SH2412 : 24 Port SIP / H.323 VoIP Gateway (12*FXO+12*FXS)
- ITG-SH2424 : 24 Port SIP / H.323 VoIP Gateway (24*FXO)

** Product specification subject to change without notice.*

Toplink C&C Corporation

3F, No. 4, Lane 609, Sec. 5, Chung Hsin Rd.,
San Chung City, Taipei Hsien 241, Taiwan, R.O.C.
Email: sales@linkpro.com.tw Tel: 886-2-22789851 (REP.)
<http://www.linkpro.com.tw>