

FiberLink M300

10/100Base-TX to 100Base-FX Media Converter

Overview

It is a Fast Ethernet 10/100Base-TX to Fiber 100Base-FX converter, which is fully compliant with the IEEE 802.3u standard, features one fiber port using SC or ST connector and one STP RJ-45 10/100Base-TX port. It supports conversion of Fast Ethernet 10/100Base-TX port to fiber optic cabling. It is automatic for either full or half duplex mode. Full-duplex cabling provides bandwidth of up to 200Mbps and allows for transmission distance up to 2 km over multi mode fiber or up to 100 km over single mode fiber. FiberLink300 also provides 8 Jumpers for advance function setting, such as fix mode duplex, speed, Flow control...etc.



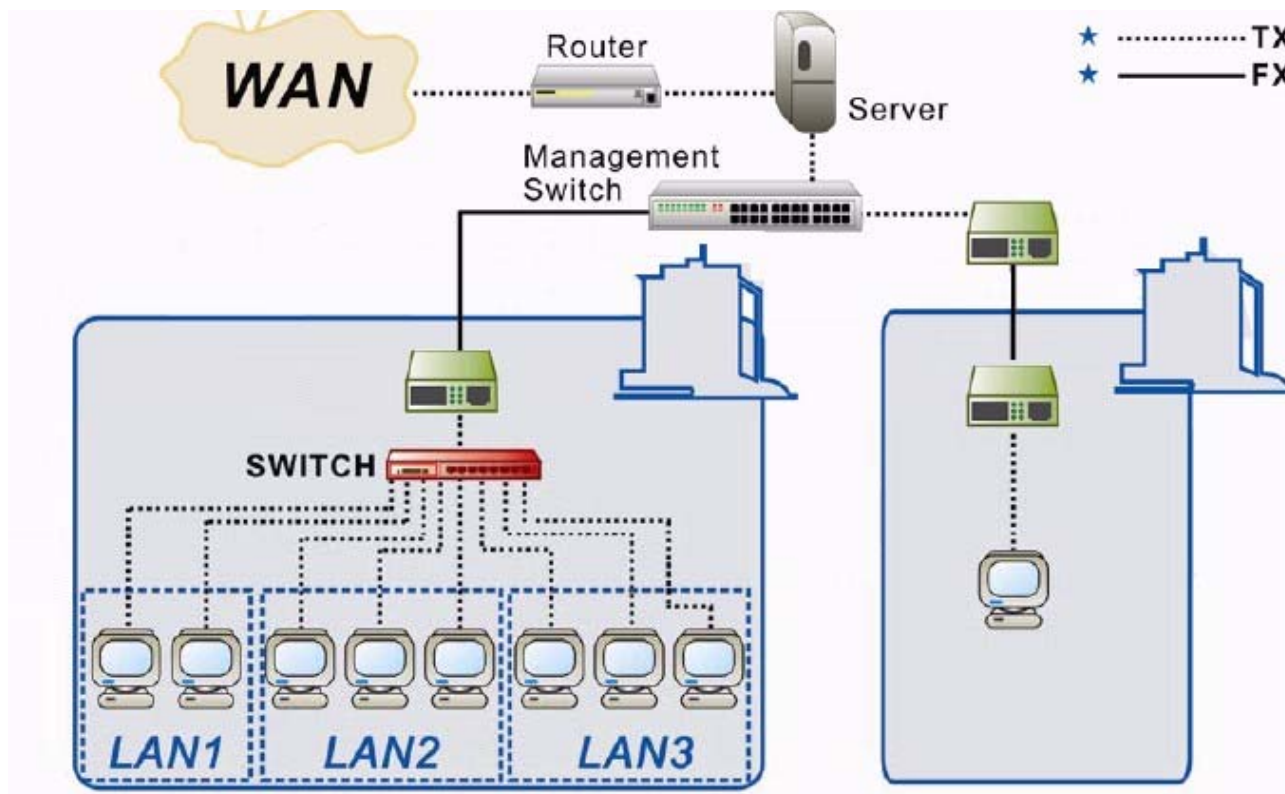
Features

- Compliant with IEEE802.3 10Base-T IEEE802.3u 100Base-TX and 100Base-FX standards
- Provide one port 10/100Base-TX auto-negotiation and Auto-MDIX with RJ-45 connector
- Provides one port multi-mode fiber-optic with SC, ST connector or single-mode fiber-optic with SC connector
- Auto-negotiation for half-duplex / full-duplex on TX ports
- Switch base design supports flow control capability
- Support full-duplex and half-duplex operation on fiber by jumpers on-board
- Supports fault propagation
- Provide 19" system chassis for up to 16-converter with redundant power supply for optional expansion use

Specifications

| | |
|-----------------------------------|---|
| Standards | <ul style="list-style-type: none"> ● IEEE802.3 10Base-T / IEEE802.3u 100Base-TX / 100Base-FX |
| Protocol | <ul style="list-style-type: none"> ● CSMA/CD |
| Network Media | <ul style="list-style-type: none"> ● 10Base-T EIA/TIA 568 Category 3,4,5,5e or 6 UTP/STP twisted pair cable ● 100Base-TX EIA/TIA 568 Category 5,5e or 6 UTP/STP twisted pair cable ● 100Base-FX: 50/125µm or 62.5/125µm multi-mode fiber optic cable, up to 2 km ● 9/125µm or 10/125µm single-mode fiber optic cable, up to 100km |
| Connector | <ul style="list-style-type: none"> ● 1 * 10/100Base-TX port ● 1 * 100Base-FX port |
| Network Data Transfer Rate | <ul style="list-style-type: none"> ● 10/100Mbps (half-duplex) ● 20/200Mbps (full-duplex) |
| LED indicators | <ul style="list-style-type: none"> ● System – Power LED ● TP port – Link/ACT, Speed and FDX/Col LED ● Fiber port – Link/ACT & FDX LEDs |
| Dimension | <ul style="list-style-type: none"> ● 102 mm x 74 mm x 22 mm (L*W*H) |
| Regulatory Compliance | <ul style="list-style-type: none"> ● CE |

Application



Ordering Information

- FLM-300T : 10/100Base-TX to 100Base-FX Media Converter (Multi-mode ST connector)
- FLM-300C : 10/100Base-TX to 100Base-FX Media Converter (Multi-mode SC connector)
- FLM-300C20/40/60/80/100 : 10/100Base-TX to 100Base-FX Media Converter (Single-mode SC 20/40/60/80/100km connector)

** Product specification subject to change without notice.*

Toplink C&C Corporation

3F, No. 4, Lane 609, Sec. 5, Chung Hsin Rd.,
San Chung City, Taipei Hsien 241, Taiwan, R. O. C.
Email: sales@linkpro.com.tw Tel: 886-2-22789851 (REP.)
<http://www.linkpro.com.tw>